



# MC2-R Polyclonal Antibody

|                           |  |
|---------------------------|--|
| <b>Catalog No</b>         | YP-Ab-13404  |
| <b>Isotype</b>            | IgG  |
| <b>Reactivity</b>         | Human;Mouse  |
| <b>Applications</b>       | WB;ELISA;IHC   |
| <b>Gene Name</b>          | MC2R   |
| <b>Protein Name</b>       | Adrenocorticotrophic hormone receptor  |
| <b>Immunogen</b>          | The antiserum was produced against synthesized peptide derived from human ACTHR. AA range:248-297  |
| <b>Specificity</b>        | MC2-R Polyclonal Antibody detects endogenous levels of MC2-R protein.  |
| <b>Formulation</b>        | Liquid in PBS containing 50% glycerol, 0.5% BSA and 0.02% sodium azide.  |
| <b>Source</b>             | Polyclonal, Rabbit,IgG   |
| <b>Purification</b>       | The antibody was affinity-purified from rabbit antiserum by affinity-chromatography using epitope-specific immunogen.  |
| <b>Dilution</b>           | WB 1:500-2000;IHC-p 1:50-300; ELISA 2000-20000   |
| <b>Concentration</b>      | 1 mg/ml  |
| <b>Purity</b>             | ≥90%   |
| <b>Storage Stability</b>  | -20°C/1 year   |
| <b>Synonyms</b>           | MC2R; ACTHR; Adrenocorticotrophic hormone receptor; ACTH receptor; ACTH-R; Adrenocorticotropin receptor; Melanocortin receptor 2; MC2-R  |
| <b>Observed Band</b>      | 34kD   |
| <b>Cell Pathway</b>       | Cell membrane; Multi-pass membrane protein.  |
| <b>Tissue Specificity</b> | Melanocytes and corticoadrenal tissue.   |
| <b>Function</b>           | disease:Defects in MC2R are the cause of glucocorticoid deficiency type 1 (GCCD1) [MIM:202200]; also known as familial glucocorticoid deficiency type 1 (FGD1). GCCD1 is an autosomal recessive disorder due to congenital insensitivity or resistance to adrenocorticotropin (ACTH). It is characterized by progressive primary adrenal insufficiency, without mineralocorticoid deficiency.,function:Receptor for ACTH. This receptor is mediated by G proteins (G(s)) which activate adenylate cyclase.,similarity:Belongs to the G-protein coupled receptor 1 family.,subunit:Interacts with FALP/MRAP.,tissue specificity:Melanocytes and corticoadrenal tissue., |
| <b>Background</b>         | MC2R encodes one member of the five-member G-protein associated melanocortin receptor family. Melanocortins (melanocyte-stimulating hormones and adrenocorticotrophic hormone) are peptides derived from pro-opiomelanocortin (POMC). MC2R is selectively activated by adrenocorticotrophic hormone, whereas the other four melanocortin receptors   |



recognize a variety of melanocortin ligands. Mutations in MC2R can result in familial glucocorticoid deficiency. Alternate transcript variants have been found for this gene. [provided by RefSeq, May 2014],

**matters needing attention**

Avoid repeated freezing and thawing!

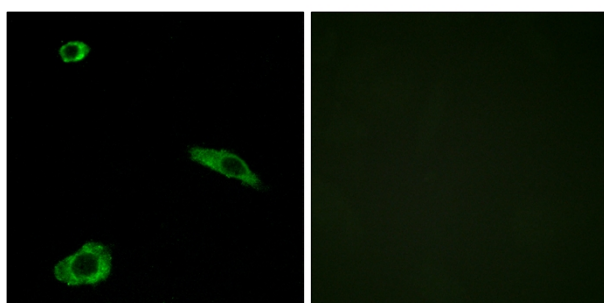
**Usage suggestions**

This product can be used in immunological reaction related experiments. For more information, please consult technical personnel.

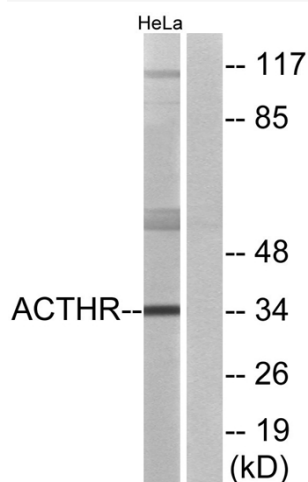
**Products Images**



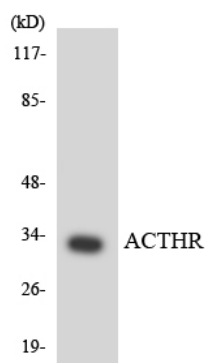
Western Blot analysis of various cells using MC2-R Polyclonal Antibody



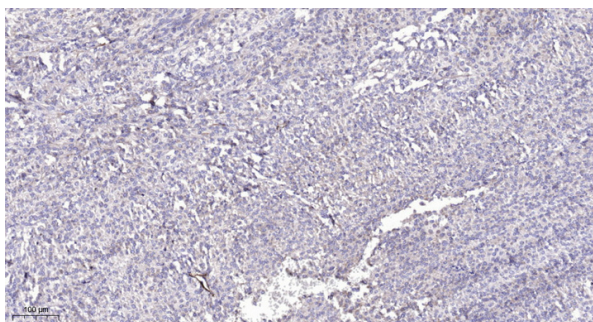
Immunofluorescence analysis of MCF7 cells, using ACTHR Antibody. The picture on the right is blocked with the synthesized peptide.



Western blot analysis of lysates from HeLa cells, using ACTHR Antibody. The lane on the right is blocked with the synthesized peptide.



Western blot analysis of the lysates from COLO205 cells using ACTHR antibody.



Immunohistochemical analysis of paraffin-embedded human Colon cancer. 1, Antibody was diluted at 1:200(4° overnight). 2, Tris-EDTA,pH9.0 was used for antigen retrieval. 3,Secondary antibody was diluted at 1:200(room temperature, 45min).